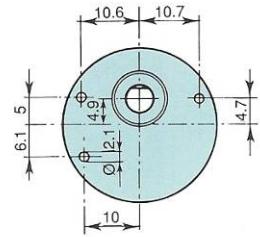
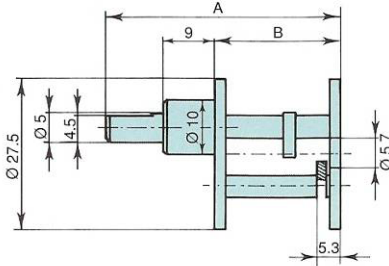


VORPE SA

GEARBOXES: QUICK LOOK

Model 100.02

Couple Torque Drehmoment	R	A	B
0.07	15 : 1	34	15.0
0.07	30 : 1	34	15.0
0.1	60 : 1	36.5	17.5
0.1	100 : 1	36.5	17.5
0.2	200 : 1	41.5	22.5
0.2 Nm	500 : 1	41.5	22.5



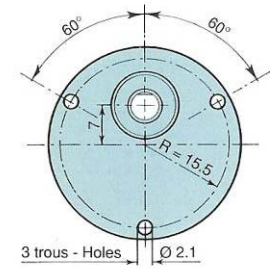
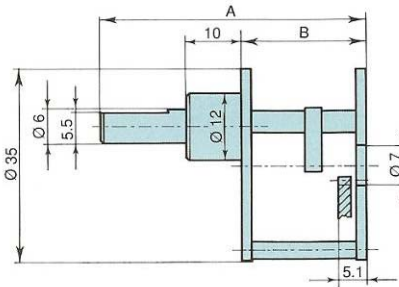
Charge axiale
Axial load: 15 N max
Achsiallast

Jeu angulaire
Angular backlash: 1°
Getriebspiel

Model 100.02
Motor pinion 100.02.038
Dimensions en mm

Model 4230 New 6230

Couple Torque Drehmoment	Ratio	Ratio	A	B	
4230	4230	6230			
0.1 Nm	0.15	6 : 1	5.85 : 1	37.5	12.5
0.1	0.15	10 : 1	9.69 : 1	37.5	12.5
0.2	0.25	18 : 1	17.55 : 1	40.0	15.0
0.2	0.25	30 : 1	29.07 : 1	40.0	15.0
0.3	0.4	60 : 1	59.67 : 1	42.5	17.5
0.6	0.7	100 : 1	98.85 : 1	42.5	17.5
0.6	0.7	200 : 1	202.88 : 1	45.0	20.0
0.6	0.7	500 : 1	501.17 : 1	47.5	22.5
0.6	0.7	900 : 1	889.62 : 1	47.5	22.5



Charge axiale
Axial load: 30 N max
Achsiallast

Jeu angulaire
Angular backlash: 1°
Getriebspiel

Model 4230
Motor pinion 4230-50
Dimensions en mm

Motor pinion

